

FINAL REPORT  
TO FUNDACIÓ BARCELONA ZOO

FOR THE PROJECT:

“ASSESSING THE SPATIOTEMPORAL AVAILABILITY AND  
QUALITY OF CHIMPANZEE FOODS  
IN A DRY, OPEN AND SEASONAL HABITAT”

FOR THE SNOWFLAKE GRANT FOR RESEARCH ON PRIMATES

PRINCIPAL INVESTIGATOR:

R. ADRIANA HERNANDEZ AGUILAR

CENTRE FOR ECOLOGICAL AND EVOLUTIONARY SYNTHESIS

DEPARTMENT OF BIOSCIENCES

UNIVERSITY OF OSLO, NORWAY

## INTRODUCTION

The general focus of the funded project was to increase our understanding of the behavioural ecology of chimpanzees (*Pan troglodytes*) living in an unprotected savanna habitat: the Issa study area within the Masito-Ugalla Ecosystem (hereafter MUE) in western Tanzania. The MUE is a very large landscape (10,800 km<sup>2</sup>) with relatively low human impact in comparison to most places where chimpanzees live and thus is an ideal region for conserving a viable population of this species for the future. Recently, however, anthropogenic activities have increased in this ecosystem and thus the main goal of the funded project was to obtain critical data that would contribute to improve the design of management strategies for the conservation of these endangered apes before the ecosystem becomes severely threatened by human activities.

The Issa study area is one of the driest, more open and seasonal habitats inhabited by chimpanzees and it is a mosaic composed of different vegetation types: woodland, grassland, wooded grassland, swamp, bamboo, and different kind of forests (Hernandez-Aguilar 2006, 2009). The main objective of the funded project was to assess the spatio-temporal availability and nutritional quality of foods available to the chimpanzees in this savanna habitat. Specifically, by assessing the value of the main vegetation types (forest and woodland) as food providers for the chimpanzees. The data collected by the funded project have important implications to understand the adaptation of chimpanzees to dry savanna woodland habitats and consequently aid in their conservation.

## EXPANSION OF THE FUNDED PROJECT

The data collected during the funded project were extended as follows: 1) research activities were expanded to other areas of the MUE besides the Issa study site, and 2) detailed data on anthropogenic activities in different sites of the MUE were obtained using transects and surveys. The collection of such data was not included in the original funding proposal submitted to Fundació Barcelona Zoo, but it was decided to add it because chimpanzee behavioural ecology data on more than one site as well as data on anthropogenic threats are essential to successfully design conservation activities in the ecosystem.

The funded project was further expanded because of added human resources, listed as follows: 1) Anita Gry Eriksen, a volunteer with a Masters degree in science and currently a researcher at the University of Oslo in Norway, will be working solely for the funded project during 12 months (ending in March 2019). 2) A collaboration with Camille Giuliano, a PhD student from Liverpool John Moores University in the UK who is conducting her research in the Issa study area and supervised by Dr. Alex Piel, was established involving the funded project. 3) Sood A. Ndimuligo, a Tanzanian student enrolled for his PhD at the University of Oslo has been working in two different sites in the MUE in collaboration with the funded project. Such expansion will significantly increase the impact of the project funded by Fundació Barcelona Zoo, both scientifically and regarding the conservation of the chimpanzees in the ecosystem.

## **RESULTS**

The data that were collected for the funded project are summarized below. For the description of the methods used to collect each kind of data please refer to the Project Programme submitted as part of the proposal for funding and the partial report submitted to Fundació Barcelona Zoo.

### **Climate**

Daily measurements of temperature, rainfall and relative humidity have been continually collected in the Issa study area. To assess climate variability across the large MUE, two automatic weather stations in two different sites within this ecosystem were deployed.

Average monthly temperatures did not differ among the different study sites: (Hernandez-Aguilar 2006; Piel et al. 2017). However, rainfall was found to vary across the study sites. Annual rainfall at the Issa study site ranges from 930 to 1490 mm (Hernandez-Aguilar 2006; Piel et al. 2017). The results obtained in the other study sites within the MUE fell within this range. Interestingly, within a single year, a difference of more than 300 mm in the rainfall collected in the different sites within the MUE was found. This difference is about one third of the total rainfall for some years that have been recorded in MUE. The results show that in the savanna habitat studied, temperature is a more constant climatic variable while rainfall large varies across the landscape during the same temporal scale. This variation likely influences the availability of chimpanzee plant food across the ecosystem. This will be further explored in future analyses.

### **Chimpanzee Diet**

So far during the funded project a total of 324 and 267 faecal samples for dietary analysis have been collected in the Issa study area and in other areas of MUE, respectively. A total of 77 plant species were known to be eaten by the chimpanzees at the Issa study site (Hernandez-Aguilar 2006; Piel et al. 2017) before the funded project. Now a minimum of three new plant species have been added to the list from the Issa study site. In addition, a total of 15 new plant species have been added to those known to be eaten at several sites of the MUE before the funded project (Hernandez-Aguilar 2006; Yoskikawa and Ogawa 2015; Piel et al. 2017). Direct observations of the chimpanzees at the Issa study site are becoming more frequent as the apes are slowly getting more habituated to researchers and thus the number of food species eaten will increase before data collection for the funded project is over in May 2019.

In agreement with previous findings by the team working in the Issa study site (Piel et al. 2017), the new data also show that the food plant species most frequently consumed by the chimpanzees come from forest vegetation types. When the new data from all study sites in MUE were analysed, this trend was not so clear for all sites. In some sites the majority of plant species found to be included in the chimpanzee diet occur in woodland and not in

forest vegetation types. However, inter-annual data do not exist for the study sites other than Issa and thus the species most frequently consumed could not be determined for those sites. Until data on the most frequent species are not available, the relative contribution of forest versus woodland in cannot be adequately assessed for all sites. Nevertheless, because at least more than a third of plant species in all the sites studied in the MOUE come from forest vegetation types, the importance of forests in the chimpanzee diet is confirmed. These results highlight the importance of conserving forest vegetation types for the chimpanzees in the savanna woodland habitat, as forest patches are the most sensitive to anthropogenic activities (see section on Implications for Conservation below).

## **Vegetation Sampling**

Because a savanna woodland is a mosaic habitat composed of different vegetation types, studying heterogeneity of the vegetation is critical for understanding the chimpanzee adaptation to savanna woodlands.

The data from the last vegetation transects have not been analysed yet, but preliminary results from a part of the vegetation transect data are provided here. Variation in tree species was compared between forest and woodland. Estimates of Shannon diversity index and evenness of plant species were computed in Past v. 3.2.

The number of stems per hectare was higher in all forest plots analysed compared to woodland plots, confirming that density of plants is higher in forest than in woodland. The Shannon diversity index was higher while evenness was lower in forest than in woodland. In addition, it was found that species richness significantly varied between forest patches but not between woodland patches. Finally, the Jaccard similarity coefficient in species composition was lower for forest than for woodland.

Taken together, these data show that *forests patches are significantly less similar to each other than are woodland patches*, supporting our hypothesis that vegetation is more diverse in forests than in woodlands. This has important implications for the food resources available to the chimpanzees in the habitat as a whole and in each vegetation type in particular. The results are important because they show that extensive sampling is necessary to adequately assess productivity of the different vegetation types on a mosaic habitat such as the savanna woodland where chimpanzees live. This indicates that some forest patches may be poor in chimpanzee foods but others may be richer. The diversity of forest plants and likely of food species across the landscape has important implications to understand how chimpanzees range in savannas in order to obtain adequate nutrition in a highly seasonal habitat.

## **Phenology of plant foods**

The relative abundance of plant parts (mature leaves, young leaves, flowers, and fruits, pods or seeds) of confirmed and likely chimpanzee plant foods has been recorded every month for trees, shrubs and lianas along transects in the Issa study area. The list of

confirmed plant food species is growing as direct observations of the chimpanzees progress. These plant phenology data will be analyzed when the results of the nutritional analyses of confirmed foods is obtained.

### **Nutritional Content of Foods**

Up to now, samples for nutritional analysis for a total of 35 confirmed chimpanzee food species have been collected in the Issa study area and are ready to be analysed awaiting export permits from the Tanzanian Wildlife Institute (TAWIRI). However, samples will continue to be obtained until May 2019.

### **Implications for Conservation**

During transect work and during surveys in the MUE (nearly 900 km), data on human activities in the ecosystem were collected. As mentioned above, this is a new kind of data added after the research proposal to Fundació Barcelona Zoo was awarded.

An increase of human activities was found in comparison to what was recorded in previous years. The MUE has the status of “reserve”, but the government of Tanzania does not provide any form of on-going protection, one reason being that the district offices lack personnel and monetary resources for any protection activities. The consequence is that humans enter the reserve to exploit different resources with very little consequences.

The anthropogenic threats found were as follows. The most common were the presence of livestock and bushfires. Other major activities included farming (mainly in or close to gallery forest patches), livestock keeping in farms, poaching, charcoal making and timber extraction. Of these, the most destructive is farming because the gallery forest are targeted. Gallery forest are essential as food producers for chimpanzees and other primates in the MUE (Hernandez-Aguilar 2006, Piel et al. 2016, results from the funded project) as well as in other savanna sites (McGrew et al. 1988, Hernandez-Aguilar and McGrew in prep.). The least destructive of the activities was the obtention of timber because the targeted tree species are only a few and exist in low density (results from the funded project). The only environmentally friendly activity found was bee keeping.

The following conservation activities undertaken by the funded project were: 1 ) to destroy poacher’s camps and warn the poachers about the illegality of their activities, 2) to give talks in the local school of Uvinza, closest to the Issa study site, about conservation of natural resources and the importance of chimpanzees (and other animals that share their habitat) for maintaining the health of the ecosystem, 3) to obtain scholarships for local children to attend this school.

Very importantly, thanks to the efforts of all organizations working in the region, mainly the Jane Goodall Institute Tanzania and including the research group funded by the present grant from Fundació Barcelona Zoo (the Ugalla Primate Project), the area that includes the MUE, Gombe National Park and part of Lake Tanganyika has been officially

declared the Biosphere Reserve “Gombe Masito Ugalla” by the United Nations Science and Cultural Organization (UNESCO), <https://en.unesco.org/biosphere-reserves/tanzania/gombe-masito-ugalla>. It is hoped that this new designation will help expand conservation actions in the region.

### **Publications of the project funded by Fundació Barcelona Zoo**

One article has already been published in a high impact, peer-reviewed journal of quartile 1 (attached to this report):

Moore, J., Black, J., Hernández-Aguilar, R. A., Idani, G., Piel, A. K. Stewart, F. 2016. “Chimpanzee vertebrate consumption: Savanna and forest chimpanzees compared”. *Journal of Human Evolution* 112:30-40. Impact Factor: 3.992, Quartile: Q1.

This article used diet data from several places with the Ugalla region, including Issa, to compare rates of vertebrate consumption with chimpanzee study sites across Africa. The results indicated that savanna populations seem to eat vertebrates more seasonally and eat small and solitary prey compared to forest populations.

Two more manuscripts are planned to be submitted in the first quarter of 2019 and results will be reported in the European Federation of Primatology Meeting in August 2019 in Orford (UK) and in the Tanzanian Wildlife Institute Meeting in December 2019 in Arusha (Tanzania). In addition, there will be several manuscripts in preparation.

## References

- Hernandez-Aguilar, R.A., 2006. *Ecology and nesting patterns of chimpanzees (Pan troglodytes) in Issa, Ugalla, Western Tanzania*. Ph.D. Dissertation, University of Southern California, Los Angeles.
- Hernandez-Aguilar, R.A., 2009. Chimpanzee nest distribution and site reuse in a dry habitat: implications for early hominin ranging. *J. Hum. Evol.* 57:350-364.
- McGrew, W.C., Baldwin, P.J., Tutin, C.E.G., 1988. Diet of wild chimpanzees (*Pan troglodytes verus*) at Mt. Assirik, Senegal: I. Composition. *Am. J. Primatol.* 16:213-226.
- Piel, A.K., Strampelli, P., Greathead, E., Hernandez-Aguilar, R.A., Moore, J., Stewart, F.A., 2017. The diet of open-habitat chimpanzees (*Pan troglodytes schweinfurthii*) in the Issa valley, western Tanzania. *J. Hum. Evol.* 112:57-69.
- Yoshikawa, M., Ogawa, H., 2015. Diet of savanna chimpanzees in the Ugalla area, Tanzania. *Afr. Stud. Monogr.* 36:189-209.



## Chimpanzee vertebrate consumption: Savanna and forest chimpanzees compared



Jim Moore <sup>a,\*</sup>, Jessica Black <sup>b</sup>, R. Adriana Hernandez-Aguilar <sup>c</sup>, Gen'ichi Idani <sup>d</sup>, Alex Piel <sup>e</sup>, Fiona Stewart <sup>f</sup>

<sup>a</sup> Anthropology Dept., University of California San Diego, 9500 Gilman Drive, La Jolla, CA 92093, USA

<sup>b</sup> Department of Psychology, University of Oklahoma, Dale Hall Tower, Room 705, 455 W. Lindsey, Norman, OK 73071, USA

<sup>c</sup> Centre for Ecological and Evolutionary Synthesis (CEES), Department of Biosciences, University of Oslo, P.O. Box 1066, Blindern, N-0316 Oslo, Norway

<sup>d</sup> Wildlife Research Center, Kyoto University, 2-24 Sekiden-cho, Tanaka, Sakyo, 606-8203, Japan

<sup>e</sup> School of Natural Sciences and Psychology, Liverpool John Moores University, James Parsons Building, Rm653, Byrom Street, Liverpool, L3 3AF, UK

<sup>f</sup> School of Natural Sciences and Psychology, Liverpool John Moores University, Liverpool, L3 3AF, UK

### ARTICLE INFO

#### Article history:

Received 17 March 2017

Accepted 1 September 2017

#### Keywords:

*Pan troglodytes*

Meat eating

Early hominins

Ugalla

Predation

Faunivory

### ABSTRACT

There is broad consensus among paleoanthropologists that meat-eating played a key role in the evolution of *Homo*, but the details of where, when, and why are hotly debated. It has been argued that increased faunivory was causally connected with hominin adaptation to open, savanna habitats. If savanna-dwelling chimpanzees eat meat more frequently than do forest chimpanzees, it would support the notion that open, dry, seasonal habitats promote hunting or scavenging by hominoids. Here we present observational and fecal analysis data on vertebrate consumption from several localities within the dry, open Ugalla region of Tanzania. Combining these with published fecal analyses, we summarize chimpanzee vertebrate consumption rates, showing quantitatively that savanna chimpanzee populations do not differ significantly from forest populations. Compared with forest populations, savanna chimpanzees consume smaller vertebrates that are less likely to be shared, and they do so more seasonally. Analyses of chimpanzee hunting that focus exclusively on capture of forest monkeys are thus difficult to apply to chimpanzee faunivory in open-country habitats and may be misleading when used to model early hominin behavior. These findings bear on discussions of why chimpanzees hunt and suggest that increases in hominin faunivory were related to differences between hominins and chimpanzees and/or differences between modern and Pliocene savanna woodland environments.

© 2017 Elsevier Ltd. All rights reserved.

## 1. Introduction

### 1.1. Chimpanzees and the origins of hunting by hominins

The origin, nature, and significance of hominin consumption of vertebrates have been foci of research and debate in anthropology for nearly a century. The transition from an ape-like frugivore/folivore to a more carnivorous hominin has been linked to a shift from more forested to more open, savanna environments since before the first African fossil hominin was found (e.g., Barrell, 1917). This was thought to be either because environmental change put earliest hominins into marginal savanna habitats, forcing them to

broaden their diet, or because abundant prey in savannas enabled them to expand into a vacant niche (Cartmill, 1993). To explore whether consumption of vertebrates and adaptation to savanna habitats were functionally linked in hominin evolution, it may be informative to look at meat-eating among extant chimpanzees and investigate whether adaptation to savanna habitats influences their consumption of vertebrates. Because chimpanzees and early hominins (e.g., *Ardipithecus*; Stanford, 2012) are broadly similar (e.g., body size and structure, degree of encephalization, habitat), ecological and social adaptations exhibited by savanna-dwelling chimpanzees relative to forest populations may shed light on that transition in the hominin lineage. That light may take the form of a heuristic framework for thinking about early hominins; more usefully, it may generate middle-range tests of hypotheses or discover unrecognized problems with interpretation of paleontological data (Moore, 1996; Stanford, 1996; Pickering and

\* Corresponding author.

E-mail address: [jjmoore@ucsd.edu](mailto:jjmoore@ucsd.edu) (J. Moore).



Domínguez-Rodrigo, 2012; Mitani, 2013). We agree with Sayers and Lovejoy (2008) that using modern panins to help understand extinct hominins can lead to erroneous conclusions and that such an approach must be applied with care. Using the one to help understand the other ('referential modeling') is a method that, like any other method, must be applied carefully or error can result—for example, theoretical ('strategic') modeling resulted in the now disproved single-species hypothesis (Wolpoff, 1971).

Judging from the excitement that generally surrounds chimpanzee hunting (Gilby et al., 2013), the acquisition of meat is important to them. Surprisingly, there is not a consensus as to why that is. While meat is calorically dense, the energetic cost of hunting can be high and individual yields from a divided carcass low, suggesting to some that the primary function of hunting is social (Stanford et al., 1994; Mitani and Watts, 2001). This view is supported by the observation that hunting frequencies may be higher during seasons of abundant food, contrary to what one would expect if meat were making up a nutritional shortfall (Mitani and Watts, 2005). Others emphasize that, unless carcasses were intrinsically valuable, they would have little value in social exchanges and point to ecological explanations and non-caloric nutritional benefits (Gilby et al., 2006; Tennie et al., 2009; Newton-Fisher, 2015; O'Malley et al., 2016). As noted by Newton-Fisher (2015), the uncertainty about the adaptive function of chimpanzee hunting is problematic for attempts to use chimpanzees as referential models for early hominins. A better understanding of causes of variation in hunting frequency, seasonality, and prey choice among chimpanzees is needed (Newton-Fisher, 2015).

We report here on observational and fecal data collected at the Issa, Nguye, and Bhukalai study sites, Ugalla (Tanzania), and place them in the context of published quantitative information on the prevalence of vertebrate remains in chimpanzee feces from other wild chimpanzee populations. Fecal data indicate consumption only; however, scavenging by chimpanzees is rare (Watts, 2008), such that it is therefore likely that most vertebrates consumed were hunted.

## 1.2. Fecal analysis and rates of faunivory

To compare rates of vertebrate consumption across sites requires the use of indirect evidence (fecal contents), because observational data on meat eating among savanna chimpanzees are scarce. This, in turn, requires a methodological digression, because the use of fecal analysis to detect carnivory has been categorically challenged: "feces do not appear to provide a reliable indicator of hunting: while the presence of remains can confirm that consumption does occur, little can be said about its frequency" (Newton-Fisher, 2015:1665). Both Newton-Fisher (2015) and Uehara (1997) based their reticence about fecal analysis on the rejection of such data by Boesch and Boesch (1989:551): "our experience of collecting feces during 2 years showed that such a method is not reliable as it does not match with the visual observations." Uehara (1997) also cited McGrew (1983) as calling for caution when interpreting fecal data. However, although caution is always important, in fact, McGrew (1983:47) advocated the use of fecal analysis as a "more standardized alternative" to observational data.

Is fecal analysis actually unreliable, or can it be used to estimate frequency of vertebrate consumption? To answer this question definitively, we would need concurrent quantitative data on meat consumption, defecation rates, and fecal prevalence of vertebrate remains; such data are not available. However, non-concurrent data from several sites allow us to make a crude approximate test of the method. Wrangham and van Zinnicq Bergmann Riss (1990)

concluded that the Kasekela and Kahama communities at Gombe averaged about 204 prey/year between 1972 and 1975. Between 1965 and 1967, the Kasekela/Kahama community averaged about 42 adult and adolescent individuals (Goodall, 1986). Teleki (1973) reported that an average of eight individual chimpanzees obtained portions per predation event (range 4–15). Wild chimpanzees defecate about 3–3.5 times per day (calculated from Phillips and McGrew, 2014 and Nishida et al., 1979, respectively). Finally, Lambert (2002) found that markers fed to captive chimpanzees were detected between 23 and 63 h following consumption (mean transit time and mean time of last appearance, respectively), a span of 40 h. Using the above defecation rates, this would translate into about five defecations following a meal that might contain its residue. However, inspection of Lambert (2002:Fig. 1) suggests that most markers appeared between 20 and 50 h, roughly bimodally. We therefore consider three defecations post-consumption to potentially contain identifiable residue, though recognizing that combining captive passage rates with wild defecation rates is problematic.

Based on these figures, the 42 Gombe chimpanzees described above would generate about 45,990 to 53,655 defecations/year, of which about  $204 \times 8 \times 3 = 4896$  might be expected to contain evidence of vertebrate consumption (about 9–10%).<sup>1</sup> This is a maximum figure, since meat and organs may not be detectable (Phillips and McGrew, 2013). The observed prevalence at Gombe in a sample of 1963 feces examined between 1964 and 1967 was 5.8% (McGrew, 1983). Such calculation can represent only a very crude 'test' of the reliability of fecal data. Wrangham and van Zinnicq Bergmann Riss (1990) and Stanford et al. (1994) documented significant changes in community predation rates over time, and more than five years separate the periods of fecal sampling and observational data on predations. Basing the calculation on adult and adolescent individuals, as we have done, assumes that juvenile and infant feces were rarely sampled for dietary analysis (including them would change the expected prevalence to about 7–8%). Finally, the calculation is sensitive to the average number of consumers/episode; published estimates range from 5.6 (Mahale; Takahata et al., 1984) to 10 (Taï; Boesch and Boesch, 1989). Nevertheless, we consider the correspondence between calculated and observed values to be close enough to challenge the assertion that fecal evidence is an unreliable indication of meat consumption by chimpanzees.

Why then did Boesch and Boesch (1989) conclude that fecal data are unreliable? They found evidence of vertebrate consumption in only one of 381 feces examined over two years "in the early part of the study" (Boesch and Boesch-Achermann, 2000:159; the study began in 1979). Boesch and Boesch (1989) estimated roughly 72 kills/year (120 hunts/year  $\times$  60% success rate) during 22 months in 1984–1986, 35 adults (79 individuals total) and 10 consumers/episode ( $N = 52$  kills). Combining these figures from (probably) non-overlapping time periods, the expected maximum prevalence in feces would be about 5.6% considering only adults, and including immatures would reduce it to 2.5%, still much greater than the observed 0.3%. If one treats these samples as independently drawn from a population with a true prevalence of 2.5%, the probability of finding only one positive sample is  $<0.005$ .<sup>2</sup> Does that mean fecal analysis is unreliable? No, the biological reality of 'what

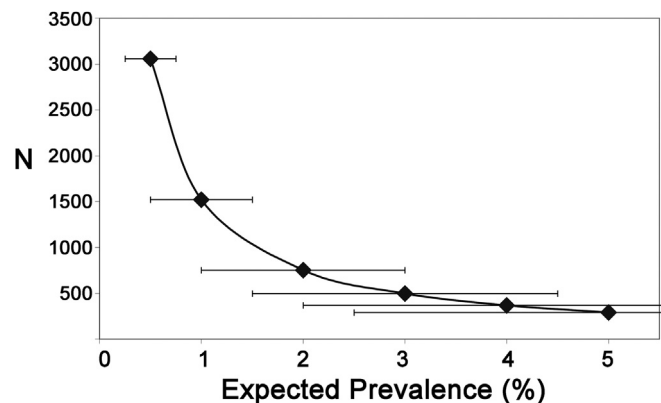
<sup>1</sup> Phillips et al. (2017) reported a median defecation rate of 6.4/day; approximately doubling both defecations/year and the number expected to contain vertebrate remains does not change the expected prevalence.

<sup>2</sup> Because of sharing, samples from the same party are not independent. Average party size at Taï is 10 (Boesch and Boesch-Achermann, 2000), so the appropriate  $N$  might be closer to 38 than to 381; one in 38 is 2.6%.

(undigestible) goes in, must come out' is hard to deny, and the Gombe example suggests that the method can reflect actual diet well within an order of magnitude. The low prevalence reported for Taï is a puzzle. Assuming that it is not an artifact of non-independent samples and does not simply reflect a failure to detect bone/hair that was present, it suggests either that the Taï chimpanzees were fastidious eaters, consuming meat and organs but not bone and hair; that the figure of 10 consumers/episode is too high by a substantial margin; that there were dramatic fluctuations in predation rate between the period of fecal collection and behavioral observations; or some other potentially interesting and informative difference between the behavior of Taï and Gombe chimpanzees.

Given the amount of attention paid to behavioral sampling methods (e.g. Altmann, 1974), it is surprising that fecal sampling has generally not been thought of as a sampling problem; i.e., little attention has been given to sample sizes, confidence limits, statistical independence, etc. (but see Hohmann and Fruth, 2008). Wrangham and van Zinnicq Bergmann Riss (1990:166) considered sample sizes of at least 500 to be "adequate" for intersite comparisons, without explanation; that is the closest we have found to an explicit consideration of the sample size problem. Figure 1 illustrates the sample sizes required to be confident of detecting vertebrate remains for expected prevalence values under 5%. The 95% confidence intervals (CI) are shown; following the recommendation of Naing et al. (2006), these are based on setting precision ( $d$ ) to 50% of expected prevalence ( $P$ ). Thus, for expected prevalence  $P = 1\%$ , we set  $d = (0.5 \times 0.01) = 0.005$  and find that a sample of  $N \geq 1521$  is required to be 95% confident of detection (i.e., for the CI to not include 0). Note that, while a sample size of 500 should detect faunivory if it is present at expected prevalences over 1%, much larger samples are needed to distinguish statistically between different observed prevalence values.

There is an important caveat to the use of Figure 1 to estimate desired sample sizes for using feces to study chimpanzee diets: it is based on the assumption that samples are independent, but chimpanzees feed in parties and share meat. Consequently, evidence of vertebrate consumption may be highly clustered (McGrew et al., 1979; e.g., Anderson et al., 1983; Alp, 1993). Sampling strategies can be designed to avoid such non-independence (Hohmann and Fruth, 2008), but no published chimpanzee study has explicitly followed such a protocol. Another bias that needs to be considered when interpreting small published samples is that, for some, it is unlikely that fecal diet data would have been presented at all had vertebrate remains not been found; i.e., there is a 'publication bias'



**Figure 1.** Recommended sample sizes to detect vertebrate remains (i.e., to exclude 0 from the 95% confidence interval) given expected prevalence under 5%.

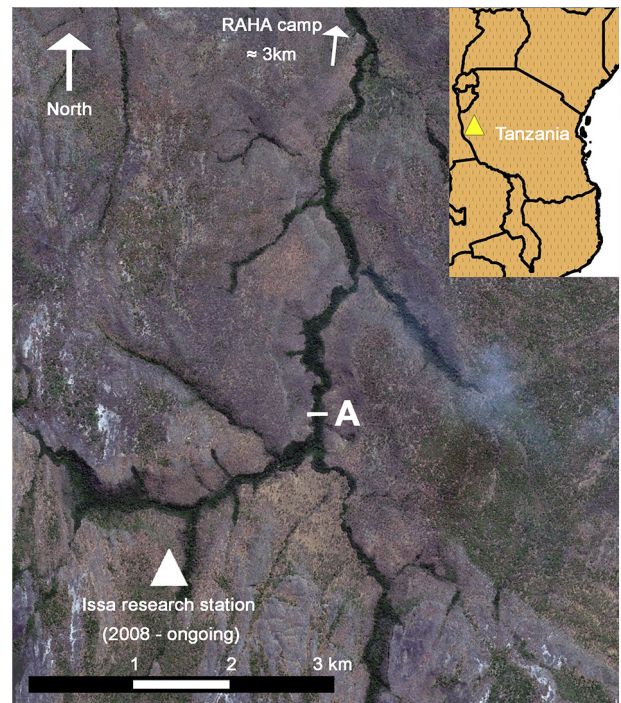
(see below). For example, Nishida (1989) reported that mammal hair was found in one of two feces examined.

Despite these issues, we believe that the problem with fecal analysis is not inherent in the method itself, but in frequent reliance on small sample sizes and failure to specify precisely what was done (Were immature individuals included? If unhabituated, was fecal size used as a criterion for collection? Were samples collected opportunistically with respect to party, time, and season, or according to a formal design? etc.), let alone standardize methods across sites (Uehara, 1997). Given some attention to methodology, we agree with Phillips and McGrew (2014:539) that "macroscopic inspection of feces can be a valuable tool to provide a generalized overview of dietary composition for primate populations." It is not possible to extrapolate from vertebrate remains in feces to mass of meat consumed on an individual basis, because prey often are shared unevenly: a scrap of hide might be all that remains of a large portion, or it may be the entire portion consumed by that chimpanzee. Given accurate identification of prey species and age/size class, it may however be possible to estimate at least relative amounts of meat consumed by a community using fecal prevalence data (Wrangham and van Zinnicq Bergmann Riss, 1990).

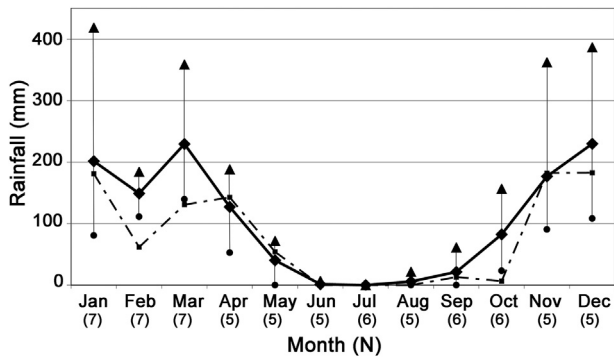
## 2. Methods

### 2.1. Field methods

Ugalla is a region of about 3000 km<sup>2</sup> of primarily savanna woodland with narrow strips of riverine forest and has been described elsewhere (Hernandez-Aguilar, 2009; Stewart et al., 2011; Moore and Vigilant, 2014; Fig. 2). Rainfall at Issa averages about 1150 mm/year (range 955–1275,  $N = 4$  complete years; one incomplete year totaled 1490 mm) with a dry season (<60 mm/month) lasting from May through October; in a typical year, no rain at all falls during June–August (Fig. 3). Data come from three distinct



**Figure 2.** Central portion of Issa study area, Ugalla. The area shown is approximately 42 km<sup>2</sup> (cf. Gombe National Park ≈ 36 km<sup>2</sup>); it is about half the area currently monitored on a regular basis. Width of the riverine evergreen forest strip at 'A' is ≈ 120 m.



**Figure 3.** Monthly rainfall at Issa. Solid line = mean, minimum, and maximum monthly rainfall at permanent camp, 2009–2015. Intermittent failures of HOBO Data Logging Rain Gauge resulted in lost data; number of months used indicated in parentheses. Dashed line = mean monthly rainfall at RAHA's camp, March 2002–May 2003.

locations: Nguye and Bhukalai (Yoshikawa and Ogawa, 2015), which are about 40 km apart, and Issa, which lies between them. Research at Issa has taken place in two phases, with one camp (October 2001–June 2003; Hernandez-Aguilar, 2009) about 9 km north of the other (October 2008–ongoing; Stewart et al., 2011). We believe that the two Issa studies have looked at the same large community of about 70 individuals with a home range >100 km<sup>2</sup> (Rudicell et al., 2011), but neither the community size nor the range have been positively confirmed. In addition to being about 9 km apart (comparable to the distance between Kanyawara and Ngogo at Kibale), Hernandez-Aguilar's camp was about 400 m lower in elevation than the current, permanent camp.

We report on fecal samples collected at Issa from October 2001 to June 2003 (Hernandez-Aguilar, 2006) and from mid-2008 through August 2015 (Piel et al., in press). We collected all fresh (estimated < 12 h old) feces encountered in clean plastic bags and returned them to camp for sluicing through a 1 mm mesh screen and examination following the recommendations of McGrew et al. (2009) and Phillips and McGrew (2014). We tried to collect whole feces, but some samples were undoubtedly incomplete due to splatter effects (Phillips and McGrew, 2013) and, for samples from 2009, we noted this as either partial or whole. During sluicing, researchers checked for any bone, hair, feathers, or flesh, in addition to plant and insect parts. Exact collection dates are not available for some Ugalla samples, so while prevalence is based on examination of 2481 samples, only 1665 were used for the seasonality analysis.

## 2.2. Literature review

For the comparative analysis, we attempted to locate all published information on prevalence of vertebrate remains in chimpanzee feces that also provided sample size. Bonobos are included for comparison but are not considered further other than to note that the popular belief that bonobos are less predatory than chimpanzees (e.g., Gilby et al., 2013) is not supported by the fecal prevalence data (Table 2). Interestingly, female bonobos may be relatively more involved in hunting than are female chimpanzees (Gruber and Clay, 2016; see also Tokuyama et al., 2017; Gilby et al., 2017). Although dichotomizing sites into 'forest' and 'savanna' masks potentially important quantitative differences in vegetation, we have followed general usage and done so for this analysis. At savanna sites, evergreen forest typically makes up 1–10% of the habitat, with the rest being primarily deciduous open grassy woodland to wooded grassland; rainfall is usually under 1200 mm/yr and there are >4 dry

months. Most forest sites are predominantly evergreen forest with rainfall over 1400 mm and shorter dry seasons. Gombe, sometimes referred to as 'woodland,' is about 25% evergreen forest overall, although the proportion of forest is much greater within the range of the main study community (Foerster et al., 2016). See Moore (1992) and Domínguez-Rodrigo (2014) for further discussion. Note that descriptions of the paleoenvironment of *Ardipithecus ramidus* as grassy woodland mosaic savanna (Domínguez-Rodrigo, 2014: Table 3) fit Ugalla well. Because predation rates are known to vary over time, we treated published studies, not sites, as the unit of analysis in the meta-analysis and figures (i.e., we did not pool the results of multiple studies at Mahale, Kanyawara, and Ugalla). We then looked for evidence of publication bias. Because chimpanzee meat-eating is of theoretical interest to anthropologists, there may be a tendency to publish positive results even when sample sizes are small. We did a funnel plot (following Nakagawa and Santos, 2012) of sample size as a function of reported prevalence of vertebrate remains and found three distinct outlier studies with high prevalence values and small samples (Fig. 4): Anderson et al. (1983), Nishida (1989), and Alp (1993). These three studies were removed from the analysis and a second funnel plot was constructed with the remaining studies (Fig. 5). Forested sites show a rough inverted funnel with the peak between 1 and 2% prevalence, as is expected in the absence of publication bias, except for two outlying points representing Gombe and Mahale. Both of those samples are large enough ( $N > 1000$ ) such that we do not believe publication bias to be responsible for their reporting.

If taken separately, savanna sites exhibit a negative relationship between sample size and fecal prevalence, which is consistent with publication bias (Fig. 5). However, this slope is not significant. Furthermore, we are investigating whether or not there is a savanna-forest difference in faunivory and there is no a priori reason to treat savanna sites separately. Additionally, all the savanna prevalence values fall well within the distribution of those of forested sites. For these reasons, the negative slope alone does not justify discounting any of the remaining savanna studies, although we note the possibility that the data may overestimate faunivory in the 'savanna' category. Only the publication of additional large sample sets can resolve this problem.

## 2.3. Data analysis

The comparison of effects across multiple studies requires meta-analytic techniques (e.g., Hedges and Olkin, 1985; Hox, 2002; McDonald, 2014). Here, we use meta-analysis to compare the prevalence of vertebrate remains in chimpanzee feces using data from multiple studies and sites. Because meta-analyses include data from studies that are by nature heterogeneous, with differences at the level of study design, purpose, data collection, time frame, and so forth, the differences between studies may confound the systematic summary of the same effect across studies and may add random error variance to any between group comparisons. Different levels of analyses (within-study cases, when available; study or site; region) make meta-analysis a special case of multi-level or hierarchical linear regression analyses (e.g., Bryk and Raudenbusch, 2001; Hox, 2002).

SAS 9.3 (PROC GLIMMIX) was used to model the data. PROC GLIMMIX fits generalized linear mixed models when the outcome variable is not normally distributed. Count data (quantity of fecal samples containing vertebrate remains) and sample size were used as the dependent variable (events/trials syntax to specify a binomial response distribution) in a mixed model, with habitat (forest vs. savanna) as a fixed between groups variable. Study site nested in habitat was entered as a random variable (including intercept;

**Table 1**  
Vertebrate consumption, Ugalla.

Evidence	Type	Season	Month/year; site; source
Hair (rodent/lagomorph; 2 separate)	Feces	May–July	6/99; Nguye; Idani, unpublished data
Vertebra (squirrel-sized)	Feces	May–July	7/02; Issa; Hernandez-Aguilar, 2006
Feathers ( <i>Steganura paradisea</i> ?)	Feces	August–October	Nguye or Bhukalai; Yoshikawa and Ogawa, 2015
Feather, bone ( <i>Corvus albus</i> ?)	Feces	August–October	8/15; Issa; UPP, unpublished data
Hair (squirrel?)	Feces	August–October	9/75; Ugalla survey; Nishida, 1989
Hair (rodent/lagomorph)	Feces	August–October	8/11; Nguye; Idani, unpublished data
Hair (rodent/lagomorph)	Feces	August–October	8/12; Nguye; Idani, unpublished data
Hoof ( <i>Oreotragus oreotragus</i> ?)	Feces	August–October	10/08; Issa; UPP, unpublished data
Blue duiker ( <i>Philantomba monticola</i> )	Observed	August–October	9/15; Issa; Ramirez-Amaya et al., 2015
Blue duiker	Observed	August–October	8/16; Issa; UPP, unpublished data
Blue duiker-sized mammal	Observed	November–January	11/16; Issa; UPP, unpublished data

**Table 2**  
Prevalence of vertebrate remains in chimpanzee and bonobo feces.

	Site	Positive	N	%	95% CI	Source
Bonobos	Wamba <sup>a</sup>	5	1001	0.50	0.1, 0.9	Kano and Mulavwa (1984)
	LuiKotale <sup>a,b</sup>	30	458	6.55	4.3, 8.8	Hohmann and Fruth (2008)
'Forest'	Lomako <sup>a</sup>	4	50	8.00	0.5, 15.5	Badrian et al. (1981)
	Boussou <sup>c,d</sup>	0	>300	0	–	Sugiyama and Koman (1987)
	Rubondo <sup>c</sup>	0	147	0	–	Moscovice et al. (2007)
	Belinga	0	25	0	–	Tutin and Fernandez (1985)
	Mahale (both) <sup>e</sup>	1	989	0.10	–0.1, 0.3	Nishida et al. (1979)
	Mahale (K) <sup>f</sup>	1	507	0.20	–0.2, 0.6	Uehara (1986) [3 periods, mid-late 1970s]
	Tai	1	381	0.26	–0.3, 0.8	Boesch and Boesch-Achermann (2000: 159)
	Gishwati <sup>c</sup>	4	1381	0.29	0.01, 0.6	Chancellor et al. (2012), Chancellor (pers. comm.)
	Kahuzi <sup>g</sup>	15	1551	0.97	0.5, 1.5	Basabose and Yamagiwa (1997)
	Mahale (M) <sup>h</sup>	48	4217	1.14	0.8, 1.5	Takahata et al. (1984)
	Lope	na	1854	1.70	1.1, 2.3	Tutin and Fernandez (1993)
	Kibale: Kanyawara	3	141	2.13	–0.03, 4.5	Phillips and McGrew (2013)
	Kalinzu	9	371	2.43	0.9, 4.0	Hashimoto et al. (2000)
	Kibale: Kanyawara	na	839	2.9	1.8, 4.0	Wrangham et al. (1991)
	Kibale: Ngogo	na	416	2.9	1.3, 4.5	Wrangham et al. (1991)
	Ndoki	8	214	3.74	1.2, 6.3	Kuroda et al. (1996)
	Bwindi	8	187	4.28	1.4, 7.2	Stanford and Nukurunungi (2003)
	Gombe: Kasakela	114	1963	5.81	4.8, 6.8	McGrew (1983)
	Mahale (M)	62	1053	5.89	4.5, 7.3	Uehara (1986) [9/83–2/84 collection dates]
Sapo <sup>a,i</sup>	5	16	31.25	8.5, 54.0	Anderson et al. (1983)	
'Savanna'	Ugalla: Issa <sup>j</sup>	3	1871	0.16	0, 0.3	Hernandez-Aguilar (2006); UPP, unpublished
	Ugalla: Nguye, Bhukalai <sup>j</sup>	1	465	0.22	–0.2, 0.6	Yoshikawa and Ogawa (2015)
	Fongoli <sup>c,k</sup>	na	>1400	0.40	0.1, 0.7	Pruetz (2006)
	Kasakati	1	174	0.57	–0.5, 1.7	Suzuki (1966)
	Bafing <sup>c</sup>	1	71	1.41	–1.3, 4.1	Duvall (2008)
	Mt. Assirik	14	783	1.79	0.9, 2.7	McGrew (1983)
	Semliki	2	72	2.78	–1.0, 6.6	Hunt and McGrew (2002)
	Ugalla: Nguye	4	143	2.80	0.1, 5.5	Idani (unpublished)
	Tenkere <sup>a,i</sup>	6	56	10.71	2.6, 18.8	Alp (1993)
	Ugalla <sup>d</sup>	1	2	50.00	–19.3, 119.3	Nishida (1989)

<sup>a</sup> Bonobos (*Pan paniscus*) and outliers not included in the analysis (provided for information only).

<sup>b</sup> Hohmann and Fruth (2008) considered the problem of non-independence; the 30 positive samples come from as few as 14 events of meat-eating.

<sup>c</sup> Probably no site can be considered 'undisturbed,' but this site is more affected by humans than most; see discussion in source publication.

<sup>d</sup> Note that consumption of vertebrates was observed;  $N = 300$  used in analysis.

<sup>e</sup> Includes K Group (see note 'f' below); sample comes from shortly after local villages were removed from the area, and Takahata et al. (1984) suggested prey density was lower than during later sample periods when wildlife populations had recovered.

<sup>f</sup> K Group was in process of going extinct, it had  $\leq 3$  adult males during sampling period.

<sup>g</sup> Table 3 in Basabose and Yamagiwa (1997) gives prevalence = 0.90, but the text (p. 48) specifies 15 positive samples = 0.97.

<sup>h</sup> We have eliminated overlap between the Uehara (1986) and Takahata et al. (1984) samples.

<sup>i</sup> Multiple positive samples from a single nest cluster—known non-independence within small sample ( $N < 100$ ).

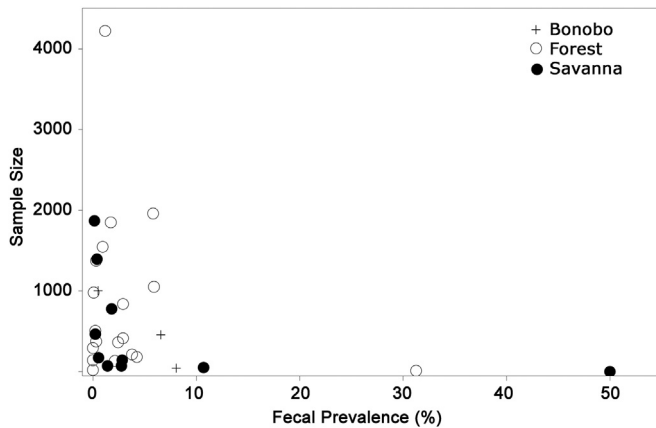
<sup>j</sup> Combines data from two camps; see text.

<sup>k</sup> Pruetz (2006) stated that 36–186 fecal samples were examined per month from May 2001 to August 2004; 38 months  $\times$  36 (the minimum) = 1368. Analysis uses  $N = 1400$ .

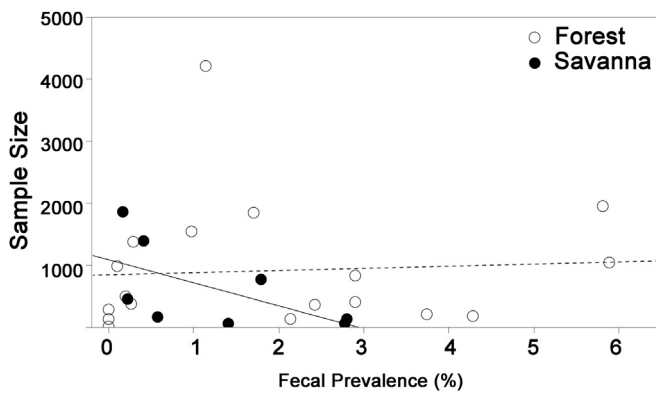
unstructured covariance matrix). When necessary, proportion was used to estimate either sample size or count according to the information provided by the original study, and where only a minimum sample size was given, we used that (e.g., for Fongoli we estimated count as 0.4% of 1400 = 5.6). Maximum likelihood estimation (LaPlace method) provided fit indices. We present estimates

for mean percentage of vertebrate remains from the mixed model; these take into account sample size, the hierarchical nature of the dataset, and the variance between sites.

All research complied with ethical policies, regulation, and guidelines from the Tanzanian Wildlife Research Institute (TAWIRI) and Commission for Science and Technology (COSTECH).



**Figure 4.** Prevalence of vertebrate remains in feces as a function of sample size, all studies. The three chimpanzee studies with prevalence >10% appear to be outliers. Bonobos included for comparison only (note negative slope suggesting publication bias).



**Figure 5.** Funnel plot of prevalence of vertebrate remains in chimpanzee feces, outliers excluded. Dashed line = forest populations, solid line = savanna populations.

### 3. Results

Table 1 lists all evidence of vertebrate consumption by the chimpanzees of Ugalla. At least 11, and probably 12, separate instances have been recorded (two positive samples collected by GI two days and 4 km apart conceivably could represent a single episode of consumption, but we consider them separately here). In five cases, the evidence was hair judged to belong to a small mammal, possibly a squirrel, and a sixth was a vertebra of a squirrel-sized mammal. Accurate field identification of hair in feces is difficult, and we cannot exclude the possibility that some were galagos (*Galago senegalensis*, *Galago moholi*, or *Otolemur crassicaudatus*). Four small ungulates were consumed; in one case, a hoof (possibly klipspringer, *Oreotragus oreotragus*) was found in feces; in two, chimpanzees were observed feeding on blue duiker (*Philantomba monticola*); and in one, the prey resembled a small blue duiker but the identification was not positive.

The Issa community is not fully habituated and observations are incomplete. In all three observed cases, the parties were large (6, 9, and ‘large’). Passive sharing by an adult male was seen in one case (Ramirez-Amaya et al., 2015), but in another an adult male monopolized the prey for several hours. In the third case, more than one individual had portions, but the sex of the primary holder could not be determined.

Vertebrate consumption at Ugalla appears to be strongly seasonal, with 11 of 12 occurrences falling during the dry season and eight of them during the late dry season, August–October. The

single rainy season occurrence, on 22 November 2016, is the ‘exception that proves the rule’—rainfall for August to mid-November that year was 99.6 mm, only 60% of average for the period (169.2 mm, range 99.6–381.5;  $N = 7$  years). The degree of seasonality needs to be corrected for observational effort, which has been biased to summer months. Combining fecal collection dates from Issa, Nishida (1989), and Yoshikawa and Ogawa (2015), 41% of 1665 samples come from August–October and account for 4 of 5 (80%) of the datable vertebrate-positive samples. Correcting that 80% figure for the sampling bias, 65% of positive fecal samples would have come from these three months.

Table 2 lists all the published results that describe prevalence of vertebrate remains in chimpanzee and bonobo feces with 95% CI. For forested sites, all prevalence values <0.25% come from sites where significant human disturbance was notable or recent at the time of sample collection, or sample size was small (<75). For savanna sites, small sample sizes (<75) were associated with higher, not lower, prevalence values (consistent with the possibility of publication bias, noted above). Only three studies, all in forest, reported no vertebrate remains in feces. Chimpanzee predation on vertebrates has been observed at two of them, Bossou and Rubondo (Sugiyama and Koman, 1987; Moscovice et al., 2007). The third, Belinga, is represented by only 25 feces.

Samples from savanna sites tended to have slightly less evidence of vertebrate remains ( $M = 0.68\%$ , 95% CI = 0.26%, 1.78%) than did those from forest sites ( $M = 1.17\%$ , CI = 0.63%, 2.17%), but the difference was not statistically significant ( $F(1, 24) = 0.96$ ,  $p = 0.337$ , odds ratio = 0.58, 95% CI = 0.18, 1.84). Removing the studies from Bossou, Rubondo, and Belinga made little difference: mean proportion for savanna ( $M = 0.68\%$ , 95% CI = 0.27%, 1.71%) remained less than that for forest ( $M = 1.47\%$ , 95% CI = 0.81%, 2.66%), but not significantly so ( $F(1, 21) = 2.13$ ,  $p = 0.159$ , odds ratio = 0.46, 95% CI = 0.15, 1.39).

Vertebrates consumed at savanna sites tend to be small and solitary. At Mt. Assirik, all known cases of meat-eating were of prosimians (galago and potto; McGrew, 1983; McGrew et al., 1988); at Fongoli, galagos made up nearly 60% of observed prey captures, with monkeys (vervet, patas, and baboons) making up 37% (Pruetz et al., 2015); and at Ugalla, 67% were thought to be squirrel/galago-sized small mammals or fledgling birds. In contrast, predation on galagos is remarkably rare at Gombe and Mahale (O’Malley, 2010). While sample sizes at Tenkere and Semliki are small, they suggest a more typical emphasis on eating monkeys. At Tenkere, the four independent predation/consumption episodes reported by Alp (1993) consist of two monkeys, a duiker, and a scaly-tailed flying squirrel, and at Semliki the only mammal consumed was black and white colobus (*Colobus guereza*; 20 observed captures and two fecal remains; Hunt and McGrew, 2002).

### 4. Discussion

The prevalence of vertebrate remains in large ( $\geq 1000$ ) samples of chimpanzee feces varies about 60-fold, from 0.1% to 5.9%. Somewhat surprisingly, given the extreme ecological and demographic differences between so-called ‘forest’ and ‘savanna’ chimpanzee populations, there is no significant difference in prevalence of fecal evidence of vertebrate consumption, echoing the apparent absence of a savanna chimpanzee pattern in insectivory (Webster et al., 2014). It is notable, however, that the two largest savanna samples, for Fongoli and Ugalla, have very low prevalence values and that the negative slope in a funnel plot analysis suggests the possibility of publication bias toward higher prevalences. Regardless of whether there is a savanna pattern in overall frequency of vertebrate consumption, savanna populations appear to consume vertebrates more seasonally and to eat more

small, solitary prey. These findings are relevant to the debate over why chimpanzees hunt (see below), and thus may have implications for understanding why early hominins consumed vertebrates.

We emphasize that, because chimpanzees typically share meat, the prevalence of vertebrate remains in feces should not be confused with the frequency of hunting. At Gombe, with fecal prevalence of 5.81% (Table 2), Teleki (1973) reported an average of eight consumers/kill. If there were no sharing, then one might expect fecal prevalence of  $5.81/8 = 0.73\%$ . Reduced sharing is likely where prey tend to be small, such as squirrels or galagos (cf. Pruetz and Bertolani, 2007). By this logic, the frequency of hunting at Mt. Assirik might in fact be greater than at Gombe or Mahale (multiplying, rather than dividing, Mt. Assirik's prevalence by  $8 = 14.3\%$ ). Only observational data can address the frequency of hunting.

#### 4.1. Intersite variation

McGrew (1983) reviewed possible ecological explanations for intersite variation in chimpanzee vertebrate consumption rates. Firstly, of course, the absence of suitable prey taxa might explain low rates. Newton-Fisher (2015) listed 32 mammalian taxa reported to have been consumed by chimpanzees (excluding chimpanzees, i.e., cannibalism); pooling allopatric variants (e.g., lumping yellow and olive baboons as 'baboons') reduces this to 27. Twenty of the 27 are reported to be present at savanna sites; Ugalla alone has 16, including favorite chimpanzee prey, red colobus (*Procolobus badius tephrosceles*), blue duiker, bushbuck (*Tragelaphus scriptus*), and bushpig (*Potamochoerus porcus*). In fact, the Issa study area at Ugalla has the largest number (40) of medium/large mammal genera (this excludes rodents, bats, and elephant shrews) reported for any chimpanzee study site (Johnson, 2014; cf. 37 for Kibale; Russak and McGrew, 2008). Secondly, McGrew (1983) suggested that abundant predators might inhibit chimpanzee hunting by cropping sick or injured prey, as well as making hunting on the ground more dangerous for chimpanzees. Ugalla has a full complement of mammalian predators, which do interact with chimpanzees (e.g., McLester et al., 2016): lion (*Panthera leo*), leopard (*Panthera pardus*), spotted hyena (*Crocuta crocuta*), and wild dog (*Lycaon pictus*), as well as smaller carnivores. The possible impact of predator competition/threat on Ugalla chimpanzee vertebrate consumption is hard to evaluate, but high rates of hunting at sites with healthy predator populations (e.g., leopard at Taï and leopard, lion, hyena, and wild dog at Mahale) suggest that competition with carnivores is unlikely to explain low meat consumption at Ugalla.

Habitat structure may explain differences in hunting rates, with broken, uneven canopies facilitating capture of arboreal prey such as monkeys (McGrew, 1983; Gilby et al., 2006). Such factors should strongly favor hunting monkeys at savanna sites where forest may be patchily distributed, as well as having uneven canopy. At Ugalla, red-tailed monkeys (*Cercopithecus ascanius*) are regularly seen in narrow strips of riverine forest of only a few trees in width and a few kilometers in length (see Fig. 2).

Demographic factors influence chimpanzees' hunting behavior and success (Mitani and Watts, 1999). Predation success is correlated with the number of males hunting (Boesch, 1994; Stanford, 1996; Mitani and Watts, 1999; Gilby et al., 2015), and low rates of vertebrate consumption by Mahale's K Group could have been due to there being only 1–3 adult males in the community (Uehara, 1986). Bossou has had only one or two adult males for many years (Sugiyama, 2004), possibly contributing to the low rate of predation there (Table 2). However, study communities at Fongoli and Semliki contain 11 and at least 29 adult males, respectively (Bogart and Pruetz, 2011; Webster et al., 2014; see the original papers for specific years covered), and the community at Issa

appears to have at least 67 members (Rudicell et al., 2011), suggesting a large number of adult males.

Finally, low densities of suitable prey species might result in such low encounter rates that chimpanzees do not learn that they are in fact suitable or do not have the opportunity to learn how best to hunt them (McGrew, 1983). Densities of larger prey are indeed low at Ugalla. Red colobus densities range from about 1 to 4 groups/km<sup>2</sup> at Gombe, Mahale, and Ngogo (Stanford, 1995; Boesch et al., 2002; Uehara, 2003; Teelen, 2007). It is difficult to calculate a meaningful density at Ugalla, but we know of only one troop within the ca. 85 km<sup>2</sup> of the Issa main study area and are aware of only three troops within the ca. 3000 km<sup>2</sup> Ugalla region, despite extensive surveys. The Issa troop is small, probably under a dozen adults, which may be a result of ecological factors or chimpanzee (or other) predation (cf. Stanford, 1995). Densities of red-tailed monkeys and bushbuck in the woodlands at Mahale are about 33–63 and 1.5–7 individuals/km<sup>2</sup>, respectively (Boesch et al., 2002; Uehara, 2003); our estimates for Issa are about 0.7 and 0.35 individuals/km<sup>2</sup>, respectively (Piel et al., 2015; woodland and forest are pooled). Preliminary estimates suggest galago (*G. senegalensis* and *O. crassicaudatus*) densities are around 20 individuals/km<sup>2</sup> (both species combined); this is at the low end for both taxa (Nash and Harcourt, 1986; Off et al., 2008; Bearder and Svoboda, 2013).

It is not clear what ecological or cognitive mechanisms are behind the (putative) association between low prey density and low rate of vertebrate consumption. Savanna chimpanzees do consume vertebrates, and arguably the patchiness of forest fragments would make it possible for even inexperienced hunters to capture arboreal prey. If vertebrate consumption by chimpanzees is primarily about nutrition, it is somewhat surprising that chimpanzees in marginal habitats have not learned to exploit available prey to a greater degree.

Alternatively, chimpanzee hunting may be driven more by social than nutritional factors (Stanford et al., 1994; Mitani and Watts, 2001; Gilby et al., 2006; Newton-Fisher, 2015). Two aspects of savanna chimpanzee vertebrate consumption may be relevant here. First, most of the observed cases (fecal or direct observation) have involved small animals like squirrels, prosimians, and birds (McGrew, 1983; Pruetz and Bertolani, 2007; Table 1), which are unlikely to be shared widely (cf. Pruetz and Bertolani, 2007). While consumption of larger animals does occur (Pruetz and Marshack, 2009; Ramirez-Amaya et al., 2015), it appears to be rare except at Semliki and Tenkere—which have the highest reported fecal prevalence values (as well as small sample sizes; Alp, 1993; Hunt and McGrew, 2002; Table 2). The second is that the low density of larger (shareable) prey may inhibit the triggering of hunting 'binges' during which hunting may occur daily for several weeks (Stanford et al., 1994; Watts and Mitani, 2002). Whether such binges derive from tactical reciprocal sharing (Moore, 1984) or simpler processes of stimulus enhancement in larger social parties, their occurrence would likely be depressed by low encounter rates with prey.

#### 4.2. Seasonality

While the sample remains small, vertebrate consumption at Ugalla appears to be highly clumped in time with eight of 12 cases falling during August–October, the late dry season; corrected for sampling effort, 65% of positive fecal samples come from these months. In the following, we refer to such clumping as 'seasonality,' while noting that the clumping does not correspond neatly with 'dry' or 'wet' rainfall seasons. At Kasakati (near Ugalla and with similar seasons), dates are available for two episodes: May (Suzuki, 1966; fecal) and October (Kawabe, 1966; observed hunt)—early dry and end dry season, respectively. At Fongoli, three of three observed predations occurred in July and August (Bogart et al.,

2008; Pruettz and Marshack, 2009). A fourth instance occurred in June (Gašperšič and Pruettz, 2004), but capture was not observed and it is possible that the chimpanzees interrupted a carnivore. Pruettz and Bertolani (2007) discussed 22 galago hunting episodes, of which one (unspecified) was successful; 13 occurred during June and July. While not strictly comparable with fecal prevalence data, pooling these gives 17 of 26 episodes during June–August (65%). The single rainy season is June–September, with May and October being ‘transitional’ months (Pruettz and Bertolani, 2009); 23 of 26 (88%) episodes occurred between May–October, the rainy season. Pruettz et al. (2015) reported that 95% of tool-assisted hunting for galagos occurs during May–October. This proportion is not corrected for observation effort and so may overestimate seasonality. At Tenkere, evidence of vertebrate consumption comes from three independent sets of fecal samples and an observed predation; all occurred in February–April (the dry season), but the distribution of sampling effort is not given and the sample is small, so the degree to which this indicates seasonality is unclear (Alp, 1993). No comparable data on seasonality are available for Mt. Assirik or Semliki. In sum, 60% or more of vertebrate consumption at savanna sites appears to occur during the three consecutive peak consumption months. Those three months are either mainly dry season (Ugalla, Kasakati, Tenkere) or mainly wet season (Fongoli).

For comparison with non-savanna sites, at Gombe, about 39% of all predations occurred during the peak three months of July–September (dry season, calculated from Stanford et al. [1994]), and at Mahale, about 45% in August–October (late dry season, calculated from Hosaka et al. [2001]). At Tai, the three peak months for successful predations are non-consecutive: June and September–October, with no data available for July. Thirty-three percent of prey captures occurred during September–October and 44% in August–October (calculated from Boesch and Boesch-Achermann, 2000:Fig. 8.1). These are the three rainiest months (Boesch and Boesch-Achermann, 2000:Fig. 1.3). Based on the available evidence, vertebrate consumption appears more strongly seasonal at savanna sites.

Pickering and Domínguez-Rodrigo (2012) have argued that chimpanzee hunting is motivated at least in part by seasonal nutritional shortfalls (but not energetic ones; Mitani and Watts, 2001; Tennie et al., 2014), and thus that vertebrate consumption should be more sharply seasonal at savanna sites, which are more seasonal than forested sites (Moore, 1992). This prediction seems to be upheld. However, the peak vertebrate consumption months correspond with annual increases in average party size at Fongoli (Pruettz and Bertolani, 2009) and Ugalla (Ugalla Primate Project [UPP], unpublished data), consistent with social hypotheses for chimpanzee hunting (e.g., Stanford et al., 1994; Mitani and Watts, 2001). Existing data are not adequate to distinguish between these nutritional shortfall and social facilitation hypotheses, but we note that most of the prey at Fongoli, Mt. Assirik, and Ugalla are small, hole-dwelling prosimians and squirrels (McGrew, 1983; Pruettz et al., 2015). Isaac and Crader (1981:101) argued that while the pursuit of large mobile prey is clearly hunting, “as the quarry becomes smaller and less mobile, the pursuit becomes less and less like hunting”—and they excluded from “hunting” the capture of nestling birds and “the digging up of small burrowing animals.” While this conflates size and mobility, it does get at an important feature of ‘hunting’ that is central to hypotheses that chimpanzees hunt for social reasons: although capture of galagos and squirrels may carry some risk (Pickering and Domínguez-Rodrigo, 2012; Pruettz et al., 2015), it is unlikely to be a venue for display (Bliege Bird and Bird, 2005) or acquiring meat to use as a social currency (Moore, 1984; Nishida et al., 1992; Mitani and Watts, 2001) because the risk is slight and there is little to share. This conclusion is supported by behavioral observations at Fongoli, which show that about half of galago captures are by females and

immatures, and sharing of these vertebrate prey is limited (Pruettz and Bertolani, 2007; Bogart et al., 2008; Pruettz and Marshack, 2009; Pruettz et al., 2015). Although seasonal peaks in meat-eating and party size are correlated at Fongoli and Ugalla, the association is not likely related to male social strategies.

Gilby et al. (2015) concluded that the association between male party size and hunting of red colobus monkeys at Kasekela and Kanyawara is due to the effect of ‘impact hunters,’ individuals who are unusually willing to initiate hunts. By diluting the colobus’ defenses, these individuals reduce the cost of hunting for other males, and an overall increase in the rate of colobus capture results through by-product mutualism. Again, such a mechanism is unlikely to be behind the season/party size/vertebrate consumption association seen at Ugalla and Fongoli, where prey are mainly solitary and small. This leaves the ‘beater effect’ (Takahata et al., 1984): larger chimpanzee parties might be more likely to disturb small prey, and the prey’s escape is more difficult with more chimpanzees around. Although such a passive mechanism is possible, observations at Fongoli indicate a seasonal increase in galago hunting effort (Pruettz et al., 2015), which suggests an active increase in motivation rather than simply a passive increase in opportunity.

Whether this evidence from savanna sites has bearing on the debate over hunting at forested sites remains to be seen; it is consistent with the conclusion of Gilby et al. (2006) that energetic and ecological factors, not social ones, underlie red colobus hunting at Gombe.

If the observed seasonal pattern has an underlying nutritional/ecological basis, the question arises whether meat consumption peaks during a time of food scarcity or of abundance. While Pickering and Domínguez-Rodrigo (2012) suggested that savanna chimpanzees might seasonally consume vertebrates during the late dry season because it is a time of (protein) scarcity, there is evidence that forest chimpanzees tend to hunt more during periods of resource (fruit) abundance. This might be because nutrient surplus enables males to adopt risky foraging tactics for primarily social reasons (Mitani and Watts, 2001, 2005), or because the costs of failure are reduced (Gilby and Wrangham, 2007). At Issa, non-fig fruit abundance (NFF, an index of resource abundance; Gilby and Wrangham, 2007) peaks during the early dry season, begins to fall in August, and is low by October (Piel et al., in press). Although more data are needed to improve temporal resolution of both vertebrate consumption and NFF abundance before we can determine whether Issa chimpanzees consume more vertebrates when fruit resources are abundant, the available data suggest they do not. Data on seasonal food abundance at Fongoli are similarly preliminary, but Pruettz (2006:173–174) reported that “the greatest percentage of fruiting plants was available during the late dry season,” preceding the wet-season peak in (galago) hunting (Pruettz et al., 2015). We do not yet have data to speak to the obvious potential distinction between fruit and protein abundance/scarcity in analysis of seasonality at savanna sites.

## 5. Conclusions

Chimpanzees may be informative to paleoanthropologists as referential/analogical models for early hominins, though (as with any analytical method) care must be utilized when used as such (Moore, 1996; Mitani, 2013). One approach is to compare categories of chimpanzees: if the differences observed between forest and savanna chimpanzees resemble those observed between early and later hominins, the factors underlying the former difference may help to illuminate the reasons for the latter one (Moore, 1996). Alternatively, lack of resemblance can help focus attention on elements of the disanalogy—that is, ways in which the model and its referent differ.

Our examination of vertebrate consumption rates at forest and savanna chimpanzee sites leads to a number of conclusions relevant to understanding both the reason(s) for hunting by chimpanzees and consideration of the increase in vertebrate consumption by early hominins:

- 1) It is not clear whether there is a 'savanna chimpanzee pattern' in the consumption of vertebrates, but when compared with forest-living populations, savanna chimpanzees tend to consume smaller vertebrates, more seasonally. While they do not consume significantly less vertebrates, they certainly do not consume more of them than do forest chimpanzees. However, because smaller prey are less likely to be shared and thus show up in the feces of multiple individuals, conclusions about actual hunting frequency cannot reliably be drawn from these data without quantitative observational data on numbers of consumers per episode.
- 2) Whether the seasonal increase in vertebrate consumption is better explained by social mechanisms—most likely a 'beater effect' at savanna sites, since theories developed to explain patterns of red colobus hunting seem unlikely to apply in such environments—or by nutritional shortfall is unknown. That the degree of seasonality is greater in savannas, where rainfall seasonality is greater, is consistent with nutritional hypotheses, but so far this is only an association.
- 3) The seasonality in largely solitary consumption of small vertebrates observed at savanna sites is unlikely to be explained by hypotheses developed to account for seasonality of red colobus hunting at forested sites in terms of social strategies. Whether the difficulty with explaining seasonality at savanna sites constitutes a challenge to the validity of those social hypotheses for addressing patterns observed at forest sites should be considered.
- 4) Because chimpanzees rarely scavenge and strongly prefer red colobus where they are available, there is a strong tendency in the literature to see chimpanzee vertebrate consumption through the lens of hunting red colobus. This has led to an important body of literature on monkey hunting by chimpanzees, but from the perspective of understanding faunivory in hominin evolution, this narrow focus may be misleading.
- 5) The population density of prey (not the availability of prey taxa) appears to have a strong effect on vertebrate consumption. This may complicate our understanding of the origins of increased hominin faunivory, because it is easier to determine taxonomic presence than absolute population densities from paleontological data.
- 6) The comparison of forest and savanna dwelling chimpanzees performed here provides no support for the idea that the adaptation of an early hominin to more arid environments would have required increased faunivory. Our results suggest that the explanation for increased hominin consumption of vertebrates is unrelated to the transition to open habitats, or involves either a relevant difference between chimpanzees and early hominins, or a difference between ancient and modern open environments. Two obvious possibilities are bipedalism (Lovejoy et al., 2009) and the greater abundance of megafauna and their predators (reviewed in Pobiner, 2015), but full exploration of those differences is beyond the scope of this paper.

## Acknowledgments

We thank Mashaka Alimas, Busoti Juma, Mlela Juma, Shedrack Lukas, Moshi Rajabu, Msigwa Rashid, Justina Boniface, Abdalla Said, and Ndai Samwely for invaluable help and enthusiasm in the field;

Rosalind Alp, Christophe Boesch, Rebecca Chancellor, Ian Gilby, Bill McGrew, and Craig Stanford for clarifying various theoretical and fieldsite questions; David Moyer for help identifying bird remains; and Ian Gilby, Margaret Schoeninger, the Editor, and two anonymous reviewers for their comments on the manuscript. Work at Issa has been supported by the Carnegie Trust for Universities of Scotland, the Centre for Ecological and Evolutionary Synthesis (University of Oslo), the [Fundació Barcelona Zoo](#), the Harold Hyam Wingate Foundation, the L.S.B. Leakey Foundation, the National Science Foundation, the Ruggles Gates Fund for Biological Anthropology, the University of California San Diego, the University of Southern California, and the Wenner Gren Foundation. We are grateful especially to the UCSD/Salk Center for Academic Research and Training in Anthropogeny (CARTA) for on-going support of the Ugalla Primate Project. Finally, we thank the Tanzanian Wildlife Research Institute (TAWIRI) and the Commission for Science and Technology (COSTECH) for permission to conduct research in Tanzania.

## References

- Alp, R., 1993. Meat eating and ant dipping by wild chimpanzees in Sierra Leone. *Primates* 34, 463–468.
- Altmann, J., 1974. Observational study of behavior: sampling methods. *Behaviour* 49, 227–267.
- Anderson, J.R., Williamson, E.A., Carter, J., 1983. Chimpanzees of Sapo Forest, Liberia: density, nests, tools and meat-eating. *Primates* 24, 594–601.
- Badrian, N., Badrian, A., Susman, R.L., 1981. Preliminary observations on the feeding behavior of *Pan paniscus* in the Lomako Forest of central Zaire. *Primates* 22, 173–181.
- Barrell, J., 1917. Probable relations of climatic change to the origin of the Tertiary ape-man. *Sci. Monthly* 4, 16–26.
- Basabose, K., Yamagiwa, J., 1997. Predation on mammals by chimpanzees in the montane forest of Kahuzi, Zaire. *Primates* 38, 45–55.
- Bearder, S.K., Svoboda, N.S., 2013. *Otolemur crassicaudatus*, large-eared greater galago. In: Butynski, T.M., Kingdon, J., Kalina, J. (Eds.), *Mammals of Africa, Primates*, vol. 2. Bloomsbury Publishing, London, pp. 409–413.
- Bliege Bird, R., Bird, D.W., 2005. Human hunting seasonality. In: Brockman, D.E., van Schaik, C.P. (Eds.), *Seasonality in Primates: Studies of Living and Extinct Human and Non-human Primates*. Cambridge University Press, Cambridge, pp. 243–266.
- Boesch, C., 1994. Cooperative hunting in wild chimpanzees. *Anim. Behav.* 48, 653–667.
- Boesch, C., Boesch, H., 1989. Hunting behavior of wild chimpanzees in the Taï National Park. *Am. J. Phys. Anthropol.* 78, 547–573.
- Boesch, C., Boesch-Achermann, H., 2000. *The Chimpanzees of the Taï Forest: Behavioural Ecology and Evolution*. Oxford University Press, Oxford.
- Boesch, C., Uehara, S., Ihobe, H., 2002. Variations in chimpanzee–red colobus interactions. In: Boesch, C., Hohmann, G., Marchant, L.F. (Eds.), *Behavioural Diversity in Chimpanzees and Bonobos*. Cambridge University Press, New York, pp. 221–230.
- Bogart, S.L., Pruett, J.D., 2011. Insectivory of savanna chimpanzees (*Pan troglodytes verus*) at Fongoli, Senegal. *Am. J. Phys. Anthropol.* 145, 11–20.
- Bogart, S.L., Pruett, J.D., Kante, D., 2008. Fongoli chimpanzee (*Pan troglodytes verus*) eats banded mongoose (*Mungos mungo*). *Pan Afr. News* 15, 15–17.
- Bryk, A.S., Raudenbusch, S.W., 2001. *Hierarchical Linear Models: Applications and Data Analysis Methods*, 2nd edition. Sage, Newbury Park.
- Cartmill, M., 1993. *A View to a Death in the Morning*. Harvard University Press, Cambridge.
- Chancellor, R.L., Rundus, A.S., Nyandwi, S., 2012. The influence of seasonal variation on chimpanzee (*Pan troglodytes schweinfurthii*) fallback food consumption, nest group size, and habitat use in Gishwati, a montane rain forest fragment in Rwanda. *Int. J. Primatol.* 33, 115–133.
- Domínguez-Rodrigo, M., 2014. Is the "savanna hypothesis" a dead concept for explaining the emergence of the earliest hominins? *Curr. Anthropol.* 55, 59–81.
- Duvall, C.S., 2008. Chimpanzee diet in the Bafing area, Mali. *Afr. J. Ecol.* 46, 679–683.
- Foerster, S., Zhong, Y., Pintea, L., Murray, C.M., Wilson, M.L., Mjungu, D.C., Pusey, A.E., 2016. Feeding habitat quality and behavioral trade-offs in chimpanzees: a case for species distribution models. *Behav. Ecol.* 27, 1004–1016.
- Gaspersić, M., Pruett, J.D., 2004. Predation on a monkey by savanna chimpanzees at Fongoli, Senegal. *Pan Afr. News* 11, 8–10.
- Gilby, I.C., Eberly, L.E., Pintea, L., Pusey, A.E., 2006. Ecological and social influences on the hunting behaviour of wild chimpanzees, *Pan troglodytes schweinfurthii*. *Anim. Behav.* 72, 169–180.
- Gilby, I.C., Wilson, M.L., Pusey, A.E., 2013. Ecology rather than psychology explains co-occurrence of predation and border patrols in male chimpanzees. *Anim. Behav.* 86, 61–74.



- Gilby, I.C., Machanda, Z.P., Mjungu, D.C., Rosen, J., Muller, M.N., Pusey, A.E., Wrangham, R.W., 2015. 'Impact hunters' catalyse cooperative hunting in two wild chimpanzee communities. *Phil. Trans. R. Soc. B* 370, 20150005.
- Gilby, I.C., Machanda, Z.P., O'Malley, R.C., Murray, C.M., Lonsdorf, E.V., Walker, K., Mjungu, D.C., Otali, E., Muller, M.N., Emery Thompson, M., Pusey, A.E., Wrangham, R.W., 2017. Predation by female chimpanzees: Toward an understanding of sex differences in meat acquisition in the last common ancestor of *Pan* and *Homo*. *J. Hum. Evol.* 110, 82–94.
- Gilby, I.C., Wrangham, R.W., 2007. Risk-prone hunting by chimpanzees (*Pan troglodytes schweinfurthii*) increases during periods of high diet quality. *Behav. Ecol. Sociobiol.* 61, 1771–1779.
- Goodall, J., 1986. The Chimpanzees of Gombe: Patterns of Behavior. Harvard University Press, Cambridge.
- Gruber, T., Clay, Z., 2016. A comparison between bonobos and chimpanzees: a review and update. *Evol. Anthropol.* 25, 239–252.
- Hashimoto, C., Furuichi, T., Tashiro, Y., 2000. Ant dipping and meat eating by wild chimpanzees in the Kalinzu Forest, Uganda. *Primates* 41, 103–108.
- Hedges, L.V., Olkin, I., 1985. Statistical Methods for Meta-analysis. Academic Press, London.
- Hernandez-Aguilar, R.A., 2006. Ecology and nesting patterns of chimpanzees (*Pan troglodytes*) in Issa, Ugalla, Western Tanzania. Ph.D. Dissertation, University of Southern California, Los Angeles.
- Hernandez-Aguilar, R.A., 2009. Chimpanzee nest distribution and site reuse in a dry habitat: implications for early hominin ranging. *J. Hum. Evol.* 57, 350–364.
- Hohmann, G., Fruth, B., 2008. New records on prey capture and meat eating by bonobos at Lui Kotala, Salonga National Park, Democratic Republic of Congo. *Folia Primatol.* 79, 103–110.
- Hosaka, K., Nishida, T., Hamai, M., Matsumoto-Oda, A., Uehara, S., 2001. Predation of mammals by the chimpanzees of the Mahale Mountains, Tanzania. In: Galdikas, B.M.F., Briggs, N.E., Sheeran, L.K., Shapiro, G.L., Goodall, J. (Eds.), All Apes Great and Small. Vol. 1: African Apes. Springer, New York, pp. 107–130.
- Hox, J., 2002. Multilevel Analysis: Techniques and Applications. Lawrence Erlbaum Associates, New Jersey.
- Hunt, K.D., McGrew, W.C., 2002. Chimpanzees in the dry habitats of Assirik, Senegal and Semliki Wildlife Reserve, Uganda. In: Boesch, C., Hohmann, G., Marchant, L.F. (Eds.), Behavioural Diversity in Chimpanzees and Bonobos. Cambridge University Press, New York, pp. 35–51.
- Isaac, G.L., Crader, D.C., 1981. To what extent were early hominids carnivorous? An archaeological perspective. In: Harding, R.S.O., Teleki, G. (Eds.), Omnivorous Primates: Gathering and Hunting in Human Evolution. Columbia University Press, New York, pp. 37–103.
- Johnson, C., 2014. The feeding and movement ecology of yellow baboons (*Papio cynocephalus*) in a primate rich habitat: The Issa valley of western Tanzania. Ph.D. Dissertation, Swansea University.
- Kano, T., Mulawwa, M., 1984. Feeding ecology of the pygmy chimpanzees (*Pan paniscus*) of Wamba. In: Susman, R.L. (Ed.), The Pygmy Chimpanzee. Plenum Press, New York, pp. 233–274.
- Kawabe, M., 1966. One observed case of hunting behavior among wild chimpanzees living in the savanna woodland of western Tanzania. *Primates* 7, 393–396.
- Kuroda, S., Suzuki, S., Nishihara, T., 1996. Preliminary report on predatory behavior and meat sharing in Tschego chimpanzees (*Pan troglodytes troglodytes*) in the Ndoki Forest, Northern Congo. *Primates* 37, 253–259.
- Lambert, J.E., 2002. Digestive retention times in forest guenons (*Cercopithecus* spp.) with reference to chimpanzees (*Pan troglodytes*). *Int. J. Primatol.* 23, 1169–1185.
- Lovejoy, C.O., Suwa, G., Spurrlock, L., Asfaw, B., White, T.D., 2009. The pelvis and femur of *Ardipithecus ramidus*: the emergence of upright walking. *Science* 326, 71e1–71e6.
- McDonald, J.H., 2014. Handbook of Biological Statistics, 3rd ed. Sparky House Publishing, Baltimore.
- McGrew, W.C., 1983. Animal foods in the diets of wild chimpanzees (*Pan troglodytes*): Why cross-cultural variation? *J. Ethol.* 1, 46–61.
- McGrew, W.C., Tutin, C.E.G., Baldwin, P., 1979. New data on meat eating by wild chimpanzees. *Curr. Anthropol.* 20, 238–239.
- McGrew, W.C., Baldwin, P.J., Tutin, C.E.G., 1988. Diet of wild chimpanzees (*Pan troglodytes verus*) at Mt. Assirik, Senegal: I. Composition. *Am. J. Primatol.* 16, 213–226.
- McGrew, W.C., Marchant, L.F., Phillips, C.A., 2009. Standardized protocol for primate faecal analysis. *Primates* 50, 363–366.
- McLester, E., Stewart, F.A., Piel, A.K., 2016. Observation of an encounter between African wild dogs (*Lycaon pictus*) and a chimpanzee (*Pan troglodytes schweinfurthii*) in the Issa Valley, Tanzania. *Afr. Primates* 11, 27–36.
- Mitani, J.C., 2013. Chimpanzee models of human behavioral evolution. In: Sponheimer, M., Lee-Thorp, J.A., Reed, K.E., Ungar, P. (Eds.), Early Hominin Paleoecology. University Press of Colorado, Boulder, pp. 397–435.
- Mitani, J.C., Watts, D.P., 1999. Demographic influences on the hunting behavior of chimpanzees. *Am. J. Phys. Anthropol.* 109, 439–454.
- Mitani, J.C., Watts, D.P., 2001. Why do chimpanzees hunt and share meat? *Anim. Behav.* 61, 915–924.
- Mitani, J.C., Watts, D.P., 2005. Seasonality in hunting by non-human primates. In: Brockman, D.E., van Schaik, C.P. (Eds.), Seasonality in Primates: Studies of Living and Extinct Human and Non-human Primates. Cambridge University Press, Cambridge, pp. 215–241.
- Moore, D., Vigilant, L., 2014. A population estimate of chimpanzees (*Pan troglodytes schweinfurthii*) in the Ugalla region using standard and spatially explicit genetic capture-recapture methods. *Am. J. Primatol.* 76, 335–346.
- Moore, J., 1984. The evolution of reciprocal sharing. *Ethol. Sociobiol.* 5, 5–14.
- Moore, J., 1992. "Savanna" chimpanzees. In: Nishida, T., McGrew, W.C., Marler, P., Pickford, M., de Waal, F.B.M. (Eds.), Topics in Primatology, Human Origins, vol. 1. University of Tokyo Press, Tokyo, pp. 99–118.
- Moore, J., 1996. Savanna chimpanzees, referential models and the last common ancestor. In: McGrew, W.C., Marchant, L.F., Nishida, T. (Eds.), Great Ape Societies. Cambridge University Press, Cambridge, pp. 275–292.
- Moscovice, L.R., Issa, M.H., Petzelkova, K.J., Keuler, N.S., Snowdon, C.T., Huffman, M.A., 2007. Fruit availability, chimpanzee diet, and grouping patterns on Rubondo Island, Tanzania. *Am. J. Primatol.* 69, 487–502.
- Naing, L., Winn, T., Rusli, B.N., 2006. Practical issues in calculating the sample size for prevalence studies. *Arch. Orofacial Sci.* 1, 9–14.
- Nakagawa, S., Santos, E.S.A., 2012. Methodological issues and advances in biological meta-analysis. *Evol. Ecol.* 26, 1253–1274.
- Nash, L.T., Harcourt, C.S., 1986. Social organization of galagos in Kenyan coastal forests: II. *Galago garnettii*. *Am. J. Primatol.* 10, 357–369.
- Newton-Fisher, N.E., 2015. The hunting behavior and carnivory of wild chimpanzees. In: Henke, W., Tattersall, I. (Eds.), Handbook of Paleoanthropology. Springer Verlag, Berlin, pp. 1661–1691.
- Nishida, T., 1989. A note on the chimpanzee ecology of the Ugalla area, Tanzania. *Primates* 30, 129–138.
- Nishida, T., Uehara, S., Nyundo, R., 1979. Predatory behavior among wild chimpanzees of the Mahale Mountains. *Primates* 20, 1–20.
- Nishida, T., Hasegawa, T., Hayaki, H., Takahata, Y., Uehara, S., 1992. Meat sharing as a coalition strategy by an alpha male chimpanzee. In: Nishida, T., McGrew, W.C., Marler, P., Pickford, M., de Waal, F.B.M. (Eds.), Topics in Primatology, vol. 1. University of Tokyo Press, Tokyo, pp. 159–174.
- Off, E.C., Isbell, L.A., Young, T.P., 2008. Population density and habitat preferences of the Kenya lesser galago (*Galago senegalensis braccatus*) along the Ewaso Nyiro River, Laikipia, Kenya. *J. E. Afr. Nat. Hist.* 97, 109–116.
- O'Malley, R.C., 2010. Two observations of galago predation by the Kasakela chimpanzees of Gombe Stream National Park, Tanzania. *Pan Afr. News* 17, 17–19.
- O'Malley, R.C., Stanton, M.A., Gilby, I.C., Lonsdorf, E.V., Pusey, A., Markham, A.C., Murray, C.M., 2016. Reproductive state and rank influence patterns of meat consumption in wild female chimpanzees (*Pan troglodytes schweinfurthii*). *J. Hum. Evol.* 90, 16–28.
- Phillips, C.A., McGrew, W.C., 2013. Identifying species in chimpanzee (*Pan troglodytes*) feces: a methodological loss cause? *Int. J. Primatol.* 34, 792–807.
- Phillips, C.A., McGrew, W.C., 2014. Macroscopic inspection of ape feces: what's in a quantification method? *Am. J. Primatol.* 76, 539–550.
- Phillips, C.A., Wrangham, R.W., McGrew, W.C., 2017. Non-dietary analytical features of chimpanzee scats. *Primates* 58, 393–402.
- Pickering, T.R., Domínguez-Rodrigo, M., 2012. Can we use chimpanzee behavior to model early hominin hunting? In: Domínguez-Rodrigo, M. (Ed.), Stone Tools and Fossil Bones: Debates in the Archaeology of Human Origins. Cambridge University Press, Cambridge, pp. 174–197.
- Piel, A.K., Lenoel, A., Johnson, C., Stewart, F.A., 2015. Deterring poaching in western Tanzania: the presence of wildlife researchers. *Global Ecol. Conserv.* 3, 188–199.
- Piel, A.K., Strampelli, P., Greathead, E., Hernandez-Aguilar, R.A., Moore, J., Stewart, F.A., 2017. The diet of open-habitat chimpanzees (*Pan troglodytes schweinfurthii*) in the Issa valley, western Tanzania. *J. Hum. Evol.* <http://dx.doi.org/10.1016/j.jhevol.2017.08.016>.
- Pobiner, B.L., 2015. New actualistic data on the ecology and energetics of hominin scavenging opportunities. *J. Hum. Evol.* 80, 1–16.
- Pruetz, J.D., 2006. Feeding ecology of savanna chimpanzees (*Pan troglodytes verus*) at Fongoli, Senegal. In: Hohmann, G., Robbins, M.M., Boesch, C. (Eds.), Feeding Ecology in Apes and Other Primates. Cambridge University Press, Cambridge, pp. 161–182.
- Pruetz, J.D., Bertolani, P., 2007. Savanna chimpanzees, *Pan troglodytes verus*, hunt with tools. *Curr. Biol.* 17, 412–417.
- Pruetz, J.D., Bertolani, P., 2009. Chimpanzee (*Pan troglodytes verus*) behavioral responses to stresses associated with living in a savanna-mosaic environment: Implications for hominin adaptations to open habitats. *PaleoAnthropology* 2009, 252–262.
- Pruetz, J.D., Marshack, J.L., 2009. Savanna chimpanzees (*Pan troglodytes verus*) prey on patas monkeys (*Erythrocebus patas*) at Fongoli, Senegal. *Pan Afr. News* 16, 15–17.
- Pruetz, J.D., Bertolani, P., Boyer Ontl, K., Lindshield, S., Shelley, M., Wessling, E.G., 2015. New evidence on the tool-assisted hunting exhibited by chimpanzees (*Pan troglodytes verus*) in a savannah habitat at Fongoli, Sénégal. *R. Soc. Open Sci.* 2, 140507.
- Ramirez-Amaya, S., McLester, E., Stewart, F.A., Piel, A.K., 2015. Savanna chimpanzees (*Pan troglodytes schweinfurthii*) consume and share blue duiker meat in the Issa Valley, Ugalla, Western Tanzania. *Pan Afr. News* 22, 17–21.
- Rudicell, R.S., Piel, A.K., Stewart, F., Moore, D.L., Learn, G.H., Li, Y., Takehisa, J., Pinteal, L., Shaw, G.M., Moore, J., Sharp, P.M., Hahn, B.H., 2011. High prevalence of simian immunodeficiency virus infection in a community of savanna chimpanzees. *J. Virol.* 85, 9918–9928.
- Russak, S.M., McGrew, W.C., 2008. Chimpanzees as fauna: comparisons of sympatric large mammals across long-term study sites. *Am. J. Primatol.* 70, 1–8.
- Sayers, K., Lovejoy, C.O., 2008. The chimpanzee has no clothes: a critical examination of *Pan troglodytes* in models of human evolution. *Curr. Anthropol.* 49, 87–114.
- Stanford, C.B., 1995. The influence of chimpanzee predation on group size and anti-predator behaviour in red colobus monkeys. *Anim. Behav.* 49, 577–587.
- Stanford, C.B., 1996. The hunting ecology of wild chimpanzees: implications for the evolutionary ecology of Pliocene hominids. *Am. Anthropol.* 98, 96–113.

- Stanford, C.B., 2012. Chimpanzees and the behavior of *Ardipithecus ramidus*. *Annu. Rev. Anthropol.* 41, 139–149.
- Stanford, C.B., Nukurungi, J.B., 2003. Behavioral ecology of sympatric chimpanzees and gorillas in Bwindi Impenetrable National Park, Uganda: diet. *Int. J. Primatol.* 24, 901–918.
- Stanford, C.B., Wallis, J.W., Mpongo, E., Goodall, J., 1994. Hunting decisions in wild chimpanzees. *Behaviour* 131, 1–18.
- Stewart, F.A., Piel, A.K., McGrew, W.C., 2011. Living archaeology: artefacts of specific nest site fidelity in wild chimpanzees. *J. Hum. Evol.* 61, 388–395.
- Sugiyama, Y., 2004. Demographic parameters and life history of chimpanzees at Bossou, Guinea. *Am. J. Phys. Anthropol.* 124, 154–165.
- Sugiyama, Y., Koman, J., 1987. A preliminary list of chimpanzees alimentation at Bossou, Guinea. *Primates* 28, 133–147.
- Suzuki, A., 1966. On the insect-eating habits among wild chimpanzees living in the savanna woodland of western Tanzania. *Primates* 7, 481–487.
- Takahata, Y., Hasegawa, T., Nishida, T., 1984. Chimpanzee predation in the Mahale Mountains from August 1979 to May 1982. *Int. J. Primatol.* 5, 213–233.
- Teelen, S., 2007. Primate abundance along five transect lines at Ngogo, Kibale National Park, Uganda. *Am. J. Primatol.* 69, 1030–1044.
- Teleki, G., 1973. *The Predatory Behavior of Wild Chimpanzees*. Bucknell University Press, Lewisburg.
- Tennie, C., Gilby, I.C., Mundry, R., 2009. The meat-scrap hypothesis: small quantities of meat may promote cooperative hunting in wild chimpanzees (*Pan troglodytes*). *Behav. Ecol. Sociobiol.* 63, 421–431.
- Tennie, C., O'Malley, R.C., Gilby, I.C., 2014. Why do chimpanzees hunt? Considering the benefits and costs of acquiring and consuming vertebrate versus invertebrate prey. *J. Hum. Evol.* 71, 38–45.
- Tokuyama, N., Moore, D.L., Graham, K.E., Lokasola, A., Furuichi, T., 2017. Cases of maternal cannibalism in wild bonobos (*Pan paniscus*) from two different field sites, Wamba and Kokolopori, Democratic Republic of the Congo. *Primates* 58, 7–12.
- Tutin, C.E.G., Fernandez, M., 1985. Foods consumed by sympatric populations of *Gorilla g. gorilla* and *Pan t. troglodytes* in Gabon: some preliminary data. *Int. J. Primatol.* 6, 27–43.
- Tutin, C.E.G., Fernandez, M., 1993. Composition of the diet of chimpanzees and comparisons with that of sympatric lowland gorillas in the Lopé Reserve, Gabon. *Am. J. Primatol.* 30, 195–211.
- Uehara, S., 1986. Sex and group differences in feeding on animals by wild chimpanzees in the Mahale Mountains National Park, Tanzania. *Primates* 27, 1–3.
- Uehara, S., 1997. Predation on mammals by the chimpanzee (*Pan troglodytes*). *Primates* 38, 193–214.
- Uehara, S., 2003. Population densities of diurnal mammals sympatric with the chimpanzees of the Mahale Mountains, Tanzania: comparison between the census data of 1996 and 2000. *Afr. Stud. Monogr.* 24, 169–179.
- Watts, D.P., 2008. Scavenging by chimpanzees at Ngogo and the relevance of chimpanzee scavenging to early hominin behavioral ecology. *J. Hum. Evol.* 54, 125–133.
- Watts, D.P., Mitani, J.C., 2002. Hunting behavior of chimpanzees at Ngogo, Kibale National Park, Uganda. *Int. J. Primatol.* 23, 1–28.
- Webster, T.H., McGrew, W.C., Marchant, L.F., Payne, C.L.R., Kevin, D., Hunt, K.D., 2014. Selective insectivory at Toro-Semliki, Uganda: comparative analyses suggest no 'savanna' chimpanzee pattern. *J. Hum. Evol.* 71, 20–27.
- Wolpoff, M.H., 1971. Competitive exclusion among Lower Pleistocene hominids: the single species hypothesis. *Man* 6, 601–614.
- Wrangham, R.W., van Zinnicq Bergmann Riss, E., 1990. Rates of predation on mammals by Gombe chimpanzees, 1972–1975. *Primates* 31, 157–170.
- Wrangham, R.W., Conklin, N.L., Chapman, C.A., Hunt, K.D., 1991. The significance of fibrous foods for Kibale Forest chimpanzees. *Phil. Trans. R. Soc. Lond. B* 334, 171–178.
- Yoshikawa, M., Ogawa, H., 2015. Diet of savanna chimpanzees in the Ugalla area, Tanzania. *Afr. Stud. Monogr.* 36, 189–209.